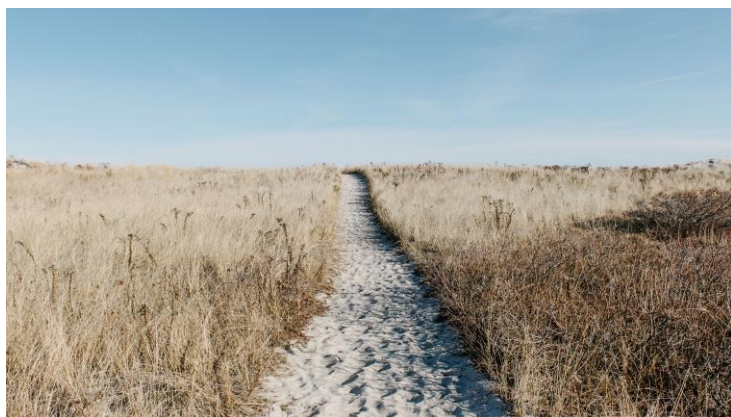


FOLLOWING THE PATH OF JESUS

Through the Gospel of Mark



#14 LISTEN UP! Mark 4:1-20 (NLT)

1. The size of a farmer's crop yield is determined by the condition of the soil
Mark 4:1-9

2. The parables of Jesus both reveal and conceal the truth about the Kingdom of God

Mark 4:10-13, Isaiah 6:9-10

3. Your receptivity to the words of Jesus is determined by the condition of your heart

Mark 4:14-20, 2 Corinthians 4:4