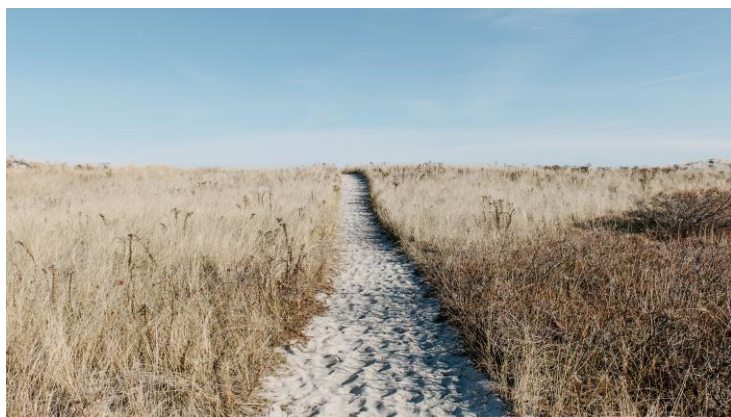


FOLLOWING THE PATH OF JESUS

Through the Gospel of Mark



#29 CAN'T YOU SEE THE SIGNS? Mark 8:11-13 (NLT)

1. People are divided about who Jesus is despite the clear evidence revealed by His public ministry.
Mark 6:34, Mat 15:28, Mark 7:37, 4:41, 6:51-52, John 14:1-9, Mark 3:22, 3:6, 8:11

2. Jesus is deeply dismayed when anyone refuses to believe in Him.

Mark 8:12, Exodus 32:9, 2 Kings 17:14,
Acts 7:51, Matthew 16:1-4, 12:38-42,
Mark 8:31, 9:31, 10:34, 2 Cor 4:3-4

3. Faith is choosing to believe based on what God has already revealed to you.
Mark 8:13, John 14:9-11, Romans 1:18, Hebrews 11:1-6, 4:7, Psalm 95:7-9, John 20:29