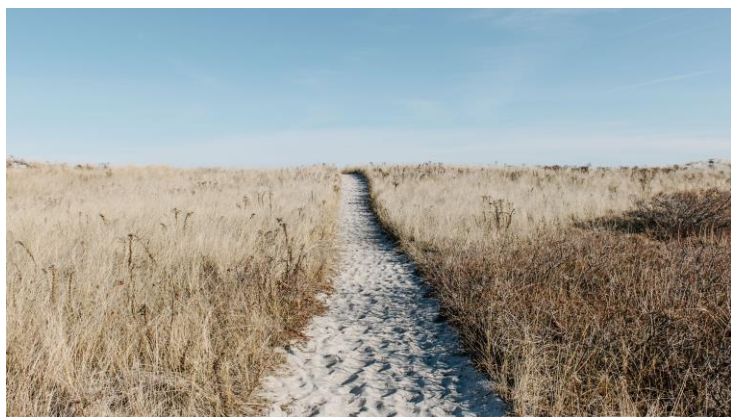


FOLLOWING THE PATH OF JESUS

Through the Gospel of Mark



#50 WHERE'S THE FRUIT?

Mark 11: 12-25 (NLT)

1. Jesus curses a fruitless fig tree as an illustration of empty religion
Mark 11:12-14, Micah 7:1-4,
Deuteronomy 28:1-6, 14-20, Matthew 7:15-20,
John 15:5-8

2. Jesus declares His Temple to be a place of prayer and worship for all people
Mark 11:15-19, Isaiah 56:7, Jeremiah 7:9-14,
John 2:13-16, 4:23-24

3. Jesus teaches His disciples to worship God by believing, praying, and trusting in Him
Mark 11:20-25, 1 Peter 2:4-5a,
Ephesians 2:19-21, 1 Corinthians 3:16-17,
James 1:5-8. John 15:16, Matthew 6:14-15